

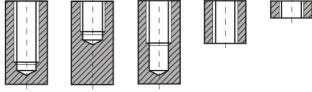
## DÜZ MAKİNE KILAVUZU - DIN 371 HSS-E

### STRAIGHT FLUTE TAPS - DIN 371 HSS-E

► Çelik ve dökme demirin işlenmesi için uygundur.

► Suitable for tapping cast iron or similar work materials.

Delik Tipi



DIN 371



DIN 376

HSS-E

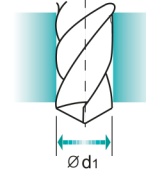
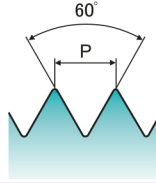
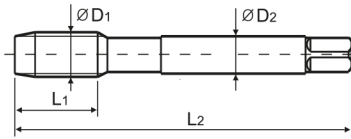
DIN  
371/376

6HX



TiN

Makine Kılavuzu  
Machine taps



Ölçü : mm

ÖLÇÜ	Adım	KOD	Dış Boyu	Tam Boy	Saft Çapı	Dört Köşe Ölçüsü	Kılavuz Matkap Çapı	
D <sub>1</sub>	P		L <sub>1</sub>	L <sub>2</sub>	D <sub>2</sub>	K	d <sub>1</sub>	
M2	× 0.4	PKI-2M2	8	45	2.8	2.1	1.6	
M2.2	× 0.45	PKI-2M2N2	8	45	2.8	2.1	1.75	
M2.3	× 0.4	PKI-2M2N3	8	45	2.8	2.1	1.9	
M2.5	× 0.45	PKI-2M2N5	9	50	2.8	2.1	2.05	
M2.6	× 0.45	PKI-2M2N6	9	50	2.8	2.1	2.1	
M3	× 0.5	PKI-2M3	11	56	3.5	2.7	2.5	
M3.5	× 0.6	PKI-2M3N5	12	56	4	3	2.9	
M4	× 0.7	PKI-2M4	13	63	4.5	3.4	3.3	
M4.5	× 0.75	PKI-2M4N5	14	70	6	4.9	3.7	
M5	× 0.8	PKI-2M5	15	70	6	4.9	4.2	
M6	× 1	PKI-2M6	17	80	6	4.9	5	
M7	× 1	PKI-2M7	17	80	7	5.5	6	
M8	× 1.25	PKI-2M8	20	90	8	6.2	6.8	
M9	× 1.25	PKI-2M9	20	90	9	7	7.8	
M10	× 1.5	PKI-2M10	22	100	10	8	8.5	
M11	× 1.5	PKI-2M11	22	100	8	6.2	9.5	
M12	× 1.75	PKI-2M12	24	110	9	7	10.2	
M14	× 2	PKI-2M14	26	110	11	9	12	
M16	× 2	PKI-2M16	27	110	12	9	14	
M18	× 2.5	PKI-2M18	30	125	14	11	15.5	
M20	× 2.5	PKI-2M20	32	140	16	12	17.5	
M22	× 2.5	PKI-2M22	32	140	18	14.5	19.5	
M24	× 3	PKI-2M24	34	160	18	14.5	21	
M27	× 3	PKI-2M27	36	160	20	16	24	
M30	× 3.5	PKI-2M30	40	180	22	18	26.5	