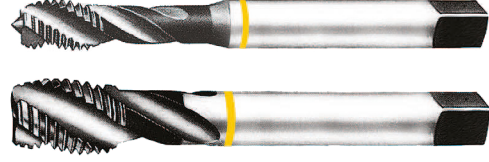
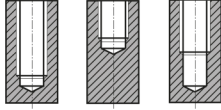


**WITHWORTH BSW HELİSEL KILAVUZ DIN2182**  
**WHITWORTH BSW PIPE THREADS DIN2182**

► Güçlü geometrisi sayesinde açık deliklerde diğer kılavuzlara göre çok daha hızlı kesme hızlarına çıkılabilir.

► Suitable for through hole in more cutting speed than other taps due to strong geometry.

Delik Tipi

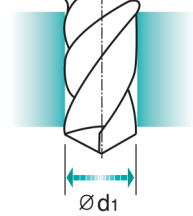
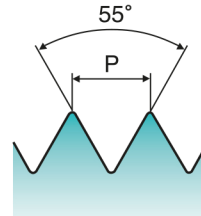
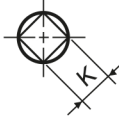
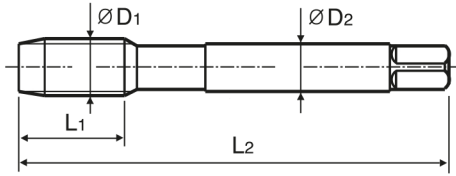


DIN 2182

DIN 2183



Makine Kılavuzu  
Machine taps



Ölçü : mm

ÖLÇÜ	Adım	KOD	Diş Boyu	Tam Boy	Şaft Çapı	Dört Köşe Ölçüsü	Kılavuz Matkap Çapı	
D <sub>1</sub>	P		L <sub>1</sub>	L <sub>2</sub>	D <sub>2</sub>	K	d <sub>1</sub>	
W1/8"	-	40	PKI-931840	7	56	3.5	2.7	2.5
W5/32"	-	32	PKI-9353232	7	63	4.5	3.4	3.1
W3/16"	-	24	PKI-9331624	10	70	6	4.9	3.6
W1/4"	-	20	PKI-931420	13	80	7	5.5	5.1
W5/16"	-	18	PKI-9351618	14	90	8	6.2	6.5
W3/8"	-	16	PKI-933816	16	100	9	7	7.9
W1/2"	-	12	PKI-931212	20	110	9	7	10.5
W5/8"	-	11	PKI-935811	22	110	12	9	13.5
W3/4"	-	10	PKI-933410	25	125	14	11	16.5
W7/8"	-	9	PKI-93789	27	140	18	14.5	19.25
W1"	-	8	PKI-9318	30	160	20	16	22