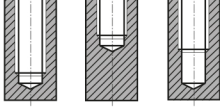


**WITHWORTH BSP BORU DIŞ HELİSEL KILAVUZ DIN5156 / HSS-E**  
**WHITWORTH BSP PIPE TAPS - DIN5156 / HSS-E**

► Güçlü geometrisi sayesinde açık deliklerde diğer kılavuzlara göre çok daha hızlı kesme hızlarına çıkılabilir.

► Suitable for through hole in more cutting speed than other taps due to strong geometry.

Delik Tipi



DIN 5156

HSS-E

DIN  
5156

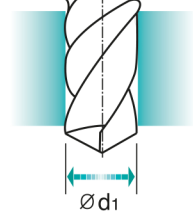
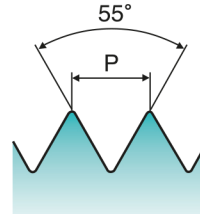
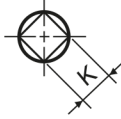
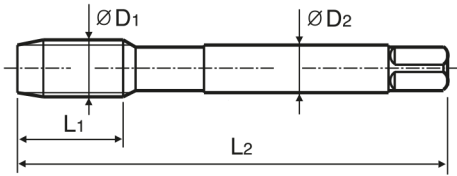
55°

C

Parlak

R40

Makine Kılavuzu  
Machine taps



Ölçü : mm

ÖLÇÜ	Adım	KOD	Diş Boyu	Tam Boy	Şaft Çapı	Dört Köşe Ölçüsü	Kılavuz Matkap Çapı	
D <sub>1</sub>	P		L <sub>1</sub>	L <sub>2</sub>	D <sub>2</sub>	K	d <sub>1</sub>	
G1/8"	- 28	PKI-931828	20	90	7	5.5	8.8	
G1/4"	- 19	PKI-931419	22	100	11	9	11.8	
G3/8"	- 19	PKI-933819	22	100	12	9	15.25	
G1/2"	- 14	PKI-931214	25	125	16	12	19	
G3/4"	- 14	PKI-933414	28	140	20	16	24.5	
G1"	- 11	PKI-931111	30	160	25	20	30.75	