

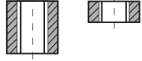
UNC DÜZ KILAVUZ (Çok Amaçlı Seri)

UNC STRAIGHT TAP (Multi Purpose Series)

- Çok amaçlı kullanım ve doğru adım profilleri, özel kılavuz geometrisi ile uzun takım ömrü.
- İsteğe göre kaplama seçeneği

- For using multi-purpose and correct thread profiles & long tool life due to special tap geometry.
- Coating is available on request

Delik Tipi



HSS-E

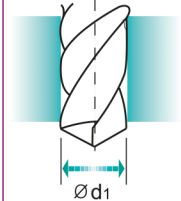
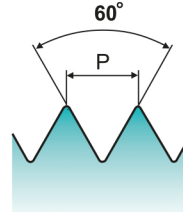
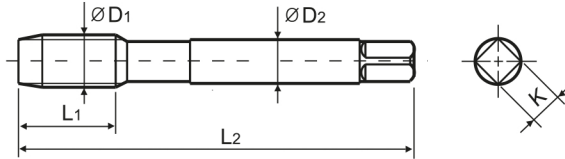
DIN
371/376

2B



BRIGHT
TiN

Makine Kılavuzu
Machine taps



Ölçü : mm

ÖLÇÜ	Adım	KOD	Diş Boyu	Tam Boy	Şaft Çapı	Dört Köşe Ölçüsü	Kılavuz Matkap Çapı	
D ₁	P		L ₁	L ₂	D ₂	K	d ₁	
#4	- 40 UNC	PKI-72440	11	56	3.5	2.7	2.3	
#5	- 40 UNC	PKI-72540	11	56	3.5	2.7	2.6	
#6	- 32 UNC	PKI-72632	12	56	4	3	2.85	
#8	- 32 UNC	PKI-72832	13	63	4.5	3.4	3.5	
#10	- 24 UNC	PKI-721024	15	70	6	4.9	3.9	
#12	- 24 UNC	PKI-721224	16	80	6	4.9	4.5	
1/4"	- 20 UNC	PKI-721420	17	80	7	5.5	5.2	
5/16"	- 18 UNC	PKI-7251618	20	90	8	6.2	6.6	
3/8"	- 16 UNC	PKI-723816	22	100	9	7	8	
7/16"	- 14 UNC	PKI-7271614	22	100	8	6.2	9.4	
1/2"	- 13 UNC	PKI-721213	25	110	9	7	10.75	
9/16"	- 12 UNC	PKI-7291612	26	110	11	9	12.25	
5/8"	- 11 UNC	PKI-725811	27	110	12	9	13.5	
3/4"	- 10 UNC	PKI-723410	30	125	14	11	16.5	
7/8"	- 9 UNC	PKI-72789	32	140	18	14.5	19.5	
1"	- 8 UNC	PKI-7218	36	160	20	16	22.25	